

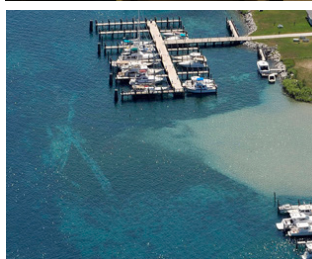
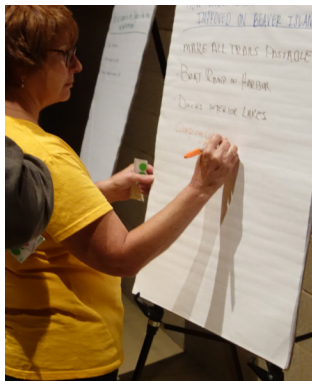
# SHAPE BEAVER ISLAND'S NEW MASTER PLAN

## WHAT IS A MASTER PLAN?

A little like a “blueprint,” a master plan is the public’s guide for the development of a community and the management of its resources.

## HOW CAN I BE INVOLVED?

There are many ways to get involved, both online and in person. Times and locations for future public gatherings, as well as interactive questions and project updates, are posted on the project website: [www.resilientmichigan.org/beaverisland](http://www.resilientmichigan.org/beaverisland)



*Resilient Beaver Island* is a collaborative community planning process for Beaver Island. The new master plan will provide guidance for successful, resilient community development in the years to come. The project is being facilitated by the Traverse City-based Land Information Access Association (LIAA), a nonprofit community services and planning organization, in partnership with the Michigan Coastal Zone Management Program.



A new community master plan is in the works for Beaver Island, and we need to hear from YOU!

## MASTER PLAN WORKSHOPS AND EVENTS

### Monday, October 10<sup>th</sup>

#### Public Gathering

7:00-8:30pm Beaver Island Community Center, Theater

Come participate in a brainstorming exercise to help shape the goals and actions of the Master Plan! Refreshments will be provided and Islanders of all ages are welcome.

### Tuesday, October 11<sup>th</sup>

#### Lunch and Learn

Noon-1:00pm Dalwhinnie Bakery & Deli

Enjoy a free lunch and learn about ways the Island can overcome challenges. Special guest speaker is Sarah Lucas, Regional Planner for Networks Northwest.

#### Joint Planning Commission Meeting

2:00pm Peaine Township Hall

The Planning Commissions from the Townships of Peaine and St. James are gathering to discuss progress on the new Master Plan, including draft goals and objectives, as well as feedback received from the public so far. Come join us to learn more about the Master Plan process!